

3-D PUSS IN BOOTS

ASSEMBLY INSTRUCTIONS

Time to complete: Approximately 45 minutes Level: Medium



GETTING STARTED

Materials

- Metal-edged ruler
- Butter knife
- Scissors or craft knife
- Cutting mat (optional)
- Multipurpose glue



- 1** Score all the pieces: Using a ruler as a guide, run the back side of a butter knife firmly along all dashed and dotted lines.



- 2** Using scissors or a craft knife and cutting mat, cut out pieces along solid lines. Don't forget to cut slits on the body piece.



- 3** Fold all pieces along score lines, using the folding key below as a reference.

Mountain Fold

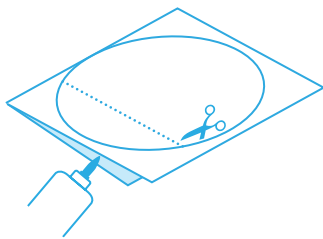


Valley Fold

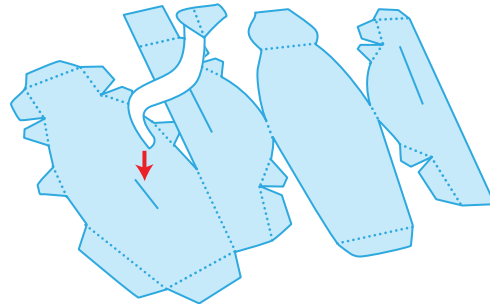


ASSEMBLE YOUR PUSS IN BOOTS

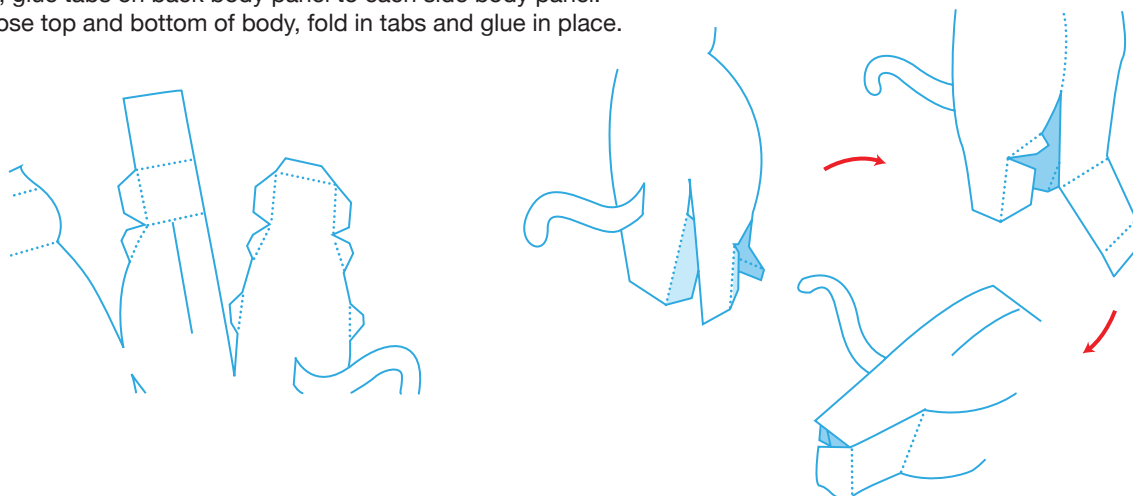
- 4 Hat feather, feet, hat brim, arms, and tail:** Fold pieces in half and glue together. Cut out shapes along solid gray lines.



- 5 Tail:** Insert (from non-printed side) into slit on back of body. Glue tabs to inside of body.

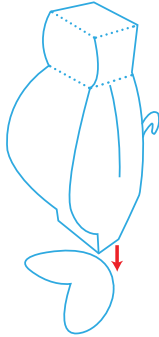


- 6 Body:** Starting at the top, glue tabs on side body panels to front body panel. Then, glue tabs on back body panel to each side body panel. To close top and bottom of body, fold in tabs and glue in place.

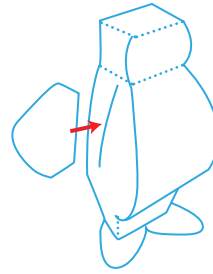


ASSEMBLY INSTRUCTIONS CONTINUED

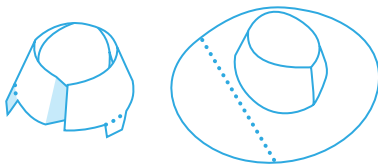
- 7 Feet:** Glue feet to base of body.



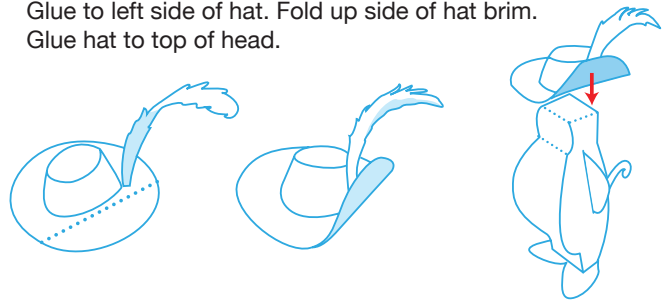
- 8 Arms:** Insert arms into slits on sides of body.



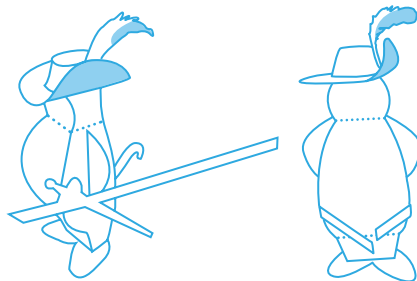
- 9 Hat:** Wrap hat around and glue tab behind other end. Fold down top of hat and glue tabs inside hat. Glue tabs on bottom of hat to top of brim.



- 10 Feather:** Cut small slits along sides of feather, and curl around finger to give shape. Glue to left side of hat. Fold up side of hat brim. Glue hat to top of head.



- 11 Belt:** Wrap around body (above the tail) and glue ends together.



- 12 You're done!**

